



## SEALING PLUG

### TECHNICAL DATA SHEET (TDS)

**BeSealed SEALING PLUG is meant for pressure resistant and watertight sealing of hollow formwork spacers. SEALING PLUG is easy to install in one single movement (installation time = 1 second). No finishing or after-treatment is required.**

#### DESCRIPTION

- BeSealed patented SEALING PLUG consists of an impact proof and pressure resistant core and a water swellable soft sealing.
- BeSealed SEALING PLUG guarantees a pressure resistant and waterproof sealing of hollow spacers made of PVC, fibre cement or steel.



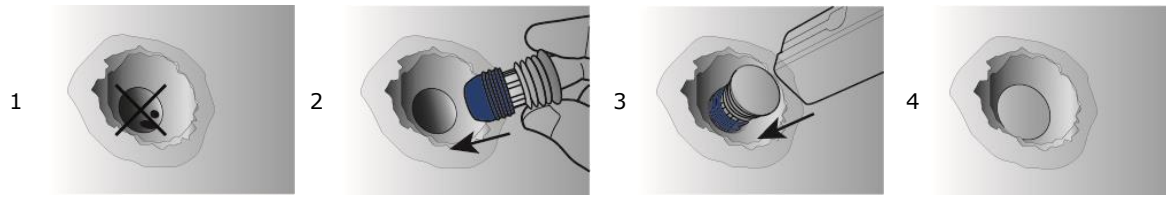
Soft water swellable sealing:  
100% watertight

Hard core:  
pressure resistant up to 6 bar

#### ADVANTAGES

- Hard core guarantees pressure resistance up to 6 bar.
- Soft sealing guarantees 100% waterproof up to 6 bar.
- BeSealed SEALING PLUG is fast and easy in use.
- Installation in one single move (installation time = 1 second), use only a hammer.
- Idiot-proof: wrong installation impossible thanks to smart sealing system.
- No finishing or after-treatment required.

## APPLICATION



1. Remove remaining concrete parts from the spacer hole.
2. Install the SEALING PLUG manually in the spacer.
3. Hit SEALING PLUG in the spacer by use of a hammer until SEALING PLUG is installed into the spacer.
4. No finishing or after-treatment required.

## TECHNICAL DATA

Suited for PVC, fiber cement, and steel spacers

Material

Hard core = impact proof polyamide (PA)

Soft sealing = hydrophilic water swellable polymer

Resistant to contact with a wide range of chemicals. Contact our technical department in case of doubt.

Swelling capacity in concrete water

>400%

Swelling capacity in fresh water

>500%

Swelling capacity in salt water

Approx. 150%

Colour

Hard core = colour of concrete (grey)

Soft sealing = blue or other color on demand

Dimensions

22mm	24mm	26mm	32mm	34mm
				

## SIZES AND PACKAGING

Size	Spacer inner $\varnothing$ (mm)	Pcs / bag	Pcs / box	Pcs / pallet
22 mm	21.50 – 22.20	100	1000	18000
24 mm	23.50 – 24.20	100	500	9000
26 mm	25.50 – 26.20	100	500	9000
32 mm	31.50 – 32.20	100	500	9000
34 mm	33.90 – 34.20	100	500	9000

## CERTIFICATES

Detailed reports and certificates available on request at [enquiries@cikome.com](mailto:enquiries@cikome.com)

## SAFETY

The safety datasheet of SEALING PLUG is available on request at [enquiries@cikome.com](mailto:enquiries@cikome.com)